

## \$410,000 - 13116 136 Avenue, Edmonton

MLS® #E4447869

**\$410,000**

5 Bedroom, 2.00 Bathroom, 1,048 sqft

Single Family on 0.00 Acres

Wellington, Edmonton, AB

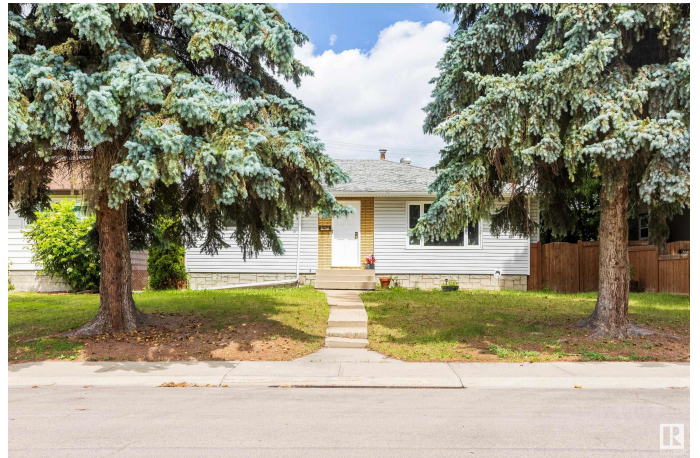
Welcome to 13116 136 Ave NW, a well-maintained 5-bedroom, 2-bathroom bungalow nestled in the heart of Wellington. This home offers the perfect blend of vintage character and practical updates, making it ideal for families, investors, or first-time buyers—complete with a DREAM MECHANIC GARAGE + RV PARKING! Step inside to a spacious main level featuring three bedrooms and one full bathroom, a bright carpeted living room (with original hardwood underneath), a cozy dining area, and a functional kitchen. The fully finished basement includes two additional bedrooms, a second bathroom, and a large rec room—perfect for movie nights, hobbies, or a home gym. The highlight? A DREAM MECHANIC GARAGE—26' x 27', HEATED with both forced air and in-floor heating, OVERSIZED, and fully equipped with ventilation and air compressor lines—just hook up your compressor! Ideal for home workshops or hobbyists. Located on a quiet street near schools, parks, and shopping, with easy access to Yellowhead Trail and downtown.

Built in 1959

### Essential Information

MLS® #

E4447869



|                |                        |
|----------------|------------------------|
| Price          | \$410,000              |
| Bedrooms       | 5                      |
| Bathrooms      | 2.00                   |
| Full Baths     | 2                      |
| Square Footage | 1,048                  |
| Acres          | 0.00                   |
| Year Built     | 1959                   |
| Type           | Single Family          |
| Sub-Type       | Detached Single Family |
| Style          | Bungalow               |
| Status         | Active                 |

### Community Information

|             |                  |
|-------------|------------------|
| Address     | 13116 136 Avenue |
| Area        | Edmonton         |
| Subdivision | Wellington       |
| City        | Edmonton         |
| County      | ALBERTA          |
| Province    | AB               |
| Postal Code | T5L 4B3          |

### Amenities

|                |  |
|----------------|--|
| Amenities      | Hot Water Natural Gas, No Smoking Home, Smart/Program. Thermostat, Workshop, See Remarks |
| Parking Spaces | 4  |
| Parking        | Double Garage Detached, Heated, Over Sized, See Remarks                                  |

### Interior

|              |  |
|--------------|--|
| Appliances   | Dishwasher-Built-In, Dryer, Freezer, Garage Control, Garage Opener, Microwave Hood Fan, Refrigerator, Storage Shed, Stove-Electric, Vacuum System Attachments, Vacuum Systems, Washer, Garage Heater |
| Heating      | Forced Air-1, Natural Gas  |
| Fireplace    | Yes  |
| Fireplaces   | Brick Facing   |
| Stories      | 2  |
| Has Basement | Yes  |
| Basement     | Full, Finished   |

### Exterior

|                   |   |
|-------------------|---|
| Exterior          | Wood, Vinyl   |
| Exterior Features | Back Lane, Fenced, Playground Nearby, Schools, Shopping Nearby, See Remarks |
| Roof              | Asphalt Shingles  |
| Construction      | Wood, Vinyl   |
| Foundation        | Concrete Perimeter  |

### School Information

|            |                           |
|------------|---------------------------|
| Elementary | McArthur School           |
| Middle     | A. Blair McPherson School |
| High       | Ross Sheppard School      |

### Additional Information

|                |                 |
|----------------|-----------------|
| Date Listed    | July 15th, 2025 |
| Days on Market | 12              |
| Zoning         | Zone 01         |

DATA IS DEEMED RELIABLE BUT IS NOT GUARANTEED ACCURATE BY THE REALTORS® ASSOCIATION OF EDMONTON. COPYRIGHT 2025 BY THE REALTORS® ASSOCIATION OF EDMONTON. ALL RIGHTS RESERVED. Trademarks are owned or controlled by the Canadian Real Estate Association (CREA) and identify real estate professionals who are members of CREA (REALTOR®, REALTORS®) and/or the quality of services they provide (MLS®, Multiple Listing Service®)

Listing information last updated on July 27th, 2025 at 5:47pm MDT