

## \$519,000 - 62 Silverstone Drive, Stony Plain

MLS® #E4444327

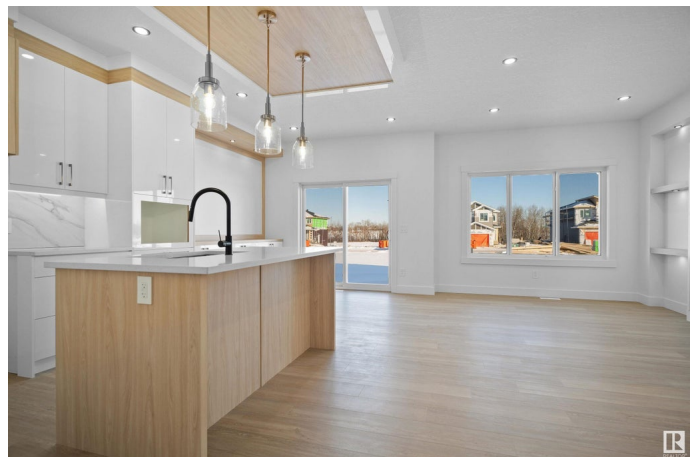
**\$519,000**

3 Bedroom, 2.50 Bathroom, 1,864 sqft

Single Family on 0.00 Acres

Silverstone, Stony Plain, AB

Regular Lot! Welcome to this beautifully designed brand-new home in the vibrant Silverstone community of Stony Plain! Offering over 1800 sq. ft. of thoughtfully planned living space, this 3-bedroom, 2.5-bath home blends style and functionality for the modern family. The main floor features 9'™ ceilings, a spacious family room, open dining area, and a chef's kitchen with a large island and walk-in pantry. You'll also find a welcoming foyer, a stylish powder room, and an expansive mudroom for everyday convenience. Upstairs, the luxurious primary suite offers a walk-in closet and a beautiful 4-piece ensuite. There are two additional bedrooms and a full bathroom, perfect for family and guests. Unwind in the spacious bonus room—ideal for movie nights, a kids' play area, or a cozy reading nook. The upper-level walk-in laundry room adds a touch of everyday convenience. This home is just minutes from parks, schools, and shopping—perfect for growing families or first-time buyers. (Photos are representative)



Built in 2025

### Essential Information

MLS® # E4444327

Price \$519,000

Bedrooms	3
Bathrooms	2.50
Full Baths	2
Half Baths	1
Square Footage	1,864
Acres	0.00
Year Built	2025
Type	Single Family
Sub-Type	Detached Single Family
Style	2 Storey
Status	Active

### **Community Information**

Address	62 Silverstone Drive
Area	Stony Plain
Subdivision	Silverstone
City	Stony Plain
County	ALBERTA
Province	AB
Postal Code	T7Z 0E8

### **Amenities**

Amenities	See Remarks
Parking	Double Garage Attached

### **Interior**

Interior Features	ensuite bathroom
Appliances	Builder Appliance Credit
Heating	Forced Air-1, Natural Gas, See Remarks
Fireplace	Yes
Fireplaces	Insert
Stories	2
Has Basement	Yes
Basement	Full, Unfinished

### **Exterior**

Exterior	Wood, Asphalt
Exterior Features	Playground Nearby, Schools, Shopping Nearby, See Remarks
Roof	Asphalt Shingles

Construction	Wood, Asphalt
Foundation	Concrete Perimeter

**Additional Information**

Date Listed	June 25th, 2025
Days on Market	21
Zoning	Zone 91

DATA IS DEEMED RELIABLE BUT IS NOT GUARANTEED ACCURATE BY THE REALTORS® ASSOCIATION OF EDMONTON. COPYRIGHT 2025 BY THE REALTORS® ASSOCIATION OF EDMONTON. ALL RIGHTS RESERVED.Trademarks are owned or controlled by the Canadian Real Estate Association (CREA) and identify real estate professionals who are members of CREA (REALTOR®, REALTORS®) and/or the quality of services they provide (MLS®, Multiple Listing Service®)

Listing information last updated on July 16th, 2025 at 3:17am MDT