

\$2,199,000 - 116 Windermere Crescent, Edmonton

MLS® #E4440318

\$2,199,000

4 Bedroom, 5.00 Bathroom, 4,281 sqft

Single Family on 0.00 Acres

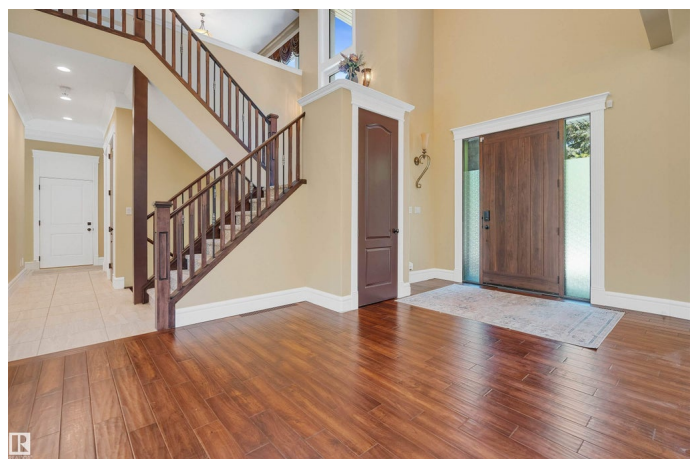
Windermere, Edmonton, AB

DISCOVER A PRIVATE LUXURY ESTATE ON OVER 1.2 ACRES IN WINDERMERE, offering unmatched PRIVACY and a RARE natural setting within the city. This custom-built retreat blends timeless sophistication with modern comfort, nestled among MATURE TREES and backing onto RAVINE, GOLF COURSE, and RIVER. With more than 6,200 SQ FT OF LIVING SPACE across three levels, the home features 4 spacious bedrooms, 5 baths, a bonus room, and convenient upper laundry. The main floor showcases SOARING CEILINGS, floor-to-ceiling windows, and a CHEF™ DREAM KITCHEN with oversized granite island, high-end appliances, and WALK-IN PANTRY. A private main floor OFFICE adds functionality, while the fully finished basement includes a MEDIA ROOM, guest suite, and rec space. Outside, the landscaped grounds and CIRCULAR DRIVEWAY provide endless room to design your perfect retreat. A PROPERTY WHERE LUXURY, NATURE, AND POSSIBILITY MEET.

Built in 2016

Essential Information

MLS® #	E4440318
Price	\$2,199,000



Bedrooms	4
Bathrooms	5.00
Full Baths	5
Square Footage	4,281
Acres	0.00
Year Built	2016
Type	Single Family
Sub-Type	Detached Single Family
Style	2 Storey
Status	Active

Community Information

Address	116 Windermere Crescent
Area	Edmonton
Subdivision	Windermere
City	Edmonton
County	ALBERTA
Province	AB
Postal Code	T6W 0S3

Amenities

Amenities	Air Conditioner, Ceiling 10 ft., Ceiling 9 ft., See Remarks
Parking	Triple Garage Attached

Interior

Interior Features	ensuite bathroom
Appliances	Air Conditioning-Central, Dishwasher-Built-In, Dryer, Refrigerator, Stove-Countertop Gas, Washer, Window Coverings, Projector
Heating	Forced Air-2, Natural Gas
Fireplace	Yes
Fireplaces	Mantel
Stories	3
Has Basement	Yes
Basement	Full, Finished

Exterior

Exterior	Wood, Stucco
Exterior Features	Backs Onto Park/Trees, Fruit Trees/Shrubs, Golf Nearby, Landscaped, Park/Reserve, Private Setting, Treed Lot

Roof	See Remarks
Construction	Wood, Stucco
Foundation	Concrete Perimeter

Additional Information

Date Listed	June 4th, 2025
Days on Market	101
Zoning	Zone 56

DATA IS DEEMED RELIABLE BUT IS NOT GUARANTEED ACCURATE BY THE REALTORS® ASSOCIATION OF EDMONTON. COPYRIGHT 2025 BY THE REALTORS® ASSOCIATION OF EDMONTON. ALL RIGHTS RESERVED.Trademarks are owned or controlled by the Canadian Real Estate Association (CREA) and identify real estate professionals who are members of CREA (REALTOR®, REALTORS®) and/or the quality of services they provide (MLS®, Multiple Listing Service®)

Listing information last updated on September 12th, 2025 at 9:47pm MDT