

Courtesy Of Michael Pino Of RE/MAX Elite

## \$565,000 - 17112 80 Street, Edmonton

MLS® #E4437833

**\$565,000**

4 Bedroom, 2.50 Bathroom, 1,970 sqft

Single Family on 0.00 Acres

Schonsee, Edmonton, AB

Terrific family home with several upgrades throughout its 2470sqft finished space, including hardwood & tile floors, new light fixtures, & 9â€™™ ceilings on the main level. The open living room is enhanced by large west-facing windows & a cozy gas fireplace. The kitchen offers espresso cabinetry, eat-up island, newer stainless steel appliances, & corner pantry. Adjacent is a well-appointed dining area with a patio door to the deck, ideal for indoor-outdoor entertaining. Upstairs, you'll find a bright bonus room with vinyl plank flooring. Down the hall is a main 4pc bath & 3 generous bedrooms, all with new carpeting, including the primary suite which boasts a 4pc ensuite & walk-in closet. The basement offers additional living space with a family room, 4th bedroom, den, & storage. Enjoy a double attached garage with new insulation, door, & opener. The backyard features an elegant stamped concrete deck & perennial trees & shrubs. Conveniently located just steps from trails, ponds, & playground.

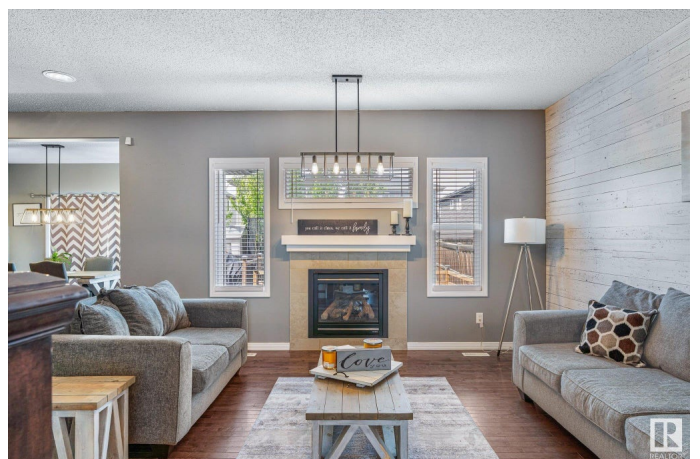
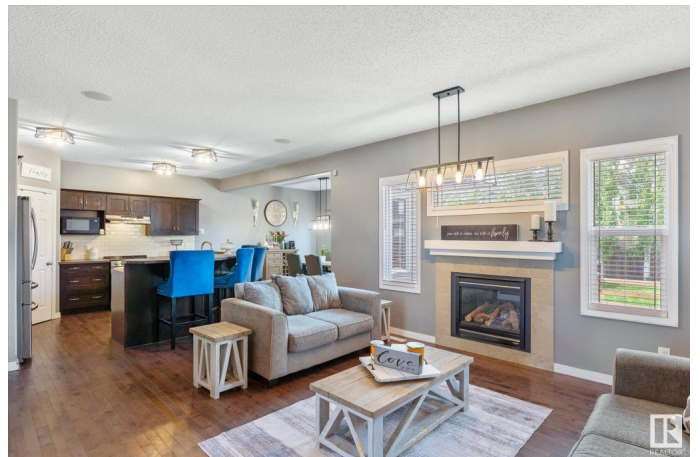
Built in 2007

### Essential Information

MLS® # E4437833

Price \$565,000

Bedrooms 4



Bathrooms	2.50
Full Baths	2
Half Baths	1
Square Footage	1,970
Acres	0.00
Year Built	2007
Type	Single Family
Sub-Type	Detached Single Family
Style	2 Storey
Status	Active

### Community Information

Address	17112 80 Street
Area	Edmonton
Subdivision	Schonsee
City	Edmonton
County	ALBERTA
Province	AB
Postal Code	T5Z 0E2

### Amenities

Amenities	Ceiling 9 ft., Deck, Detectors Smoke, Dog Run-Fenced In, Vinyl Windows
Parking	Double Garage Attached, Insulated

### Interior

Interior Features	ensuite bathroom
Appliances	Dishwasher-Built-In, Dryer, Garage Control, Garage Opener, Hood Fan, Refrigerator, Storage Shed, Stove-Electric, Washer, Window Coverings
Heating	Forced Air-1, Natural Gas
Fireplace	Yes
Fireplaces	Mantel, Tile Surround
Stories	3
Has Basement	Yes
Basement	Full, Finished

### Exterior

Exterior	Wood, Stone, Vinyl
Exterior Features	Fenced, Landscaped, No Back Lane, Playground Nearby, Public

	Transportation, Schools, Shopping Nearby
Roof	Asphalt Shingles
Construction	Wood, Stone, Vinyl
Foundation	Concrete Perimeter

### **Additional Information**

Date Listed	May 21st, 2025
Days on Market	4
Zoning	Zone 28

DATA IS DEEMED RELIABLE BUT IS NOT GUARANTEED ACCURATE BY THE REALTORS® ASSOCIATION OF EDMONTON. COPYRIGHT 2025 BY THE REALTORS® ASSOCIATION OF EDMONTON. ALL RIGHTS RESERVED. Trademarks are owned or controlled by the Canadian Real Estate Association (CREA) and identify real estate professionals who are members of CREA (REALTOR®, REALTORS®) and/or the quality of services they provide (MLS®, Multiple Listing Service®)

Listing information last updated on May 25th, 2025 at 8:17am MDT