

\$424,900 - 144 St. Andrews Drive, Stony Plain

MLS® #E4437650

\$424,900

4 Bedroom, 2.00 Bathroom, 1,146 sqft

Single Family on 0.00 Acres

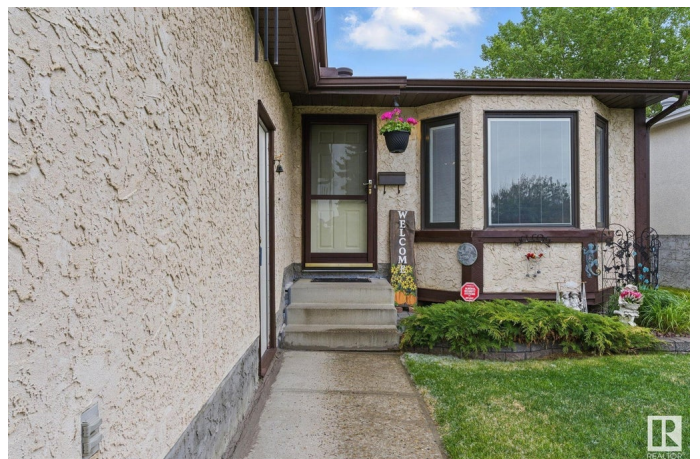
St. Andrews, Stony Plain, AB

Welcome to this beautiful 4-bedroom home in the desirable St. Andrews community of Stony Plain! Perfect for families, this home features a cozy fireplace in the family room, and a newer kitchen complete with quartz countertops, soft-close drawers, cupboards, and a slide-out pantry. Upstairs provides 2 additional bedrooms, and the spacious master suite with a separate door to the main bath. Enjoy summer evenings in the awesome backyard with a large split deck and charming gazebo. Ideally located close to schools, walking paths, shopping, a medical clinic, hospital, and golf course. With quick access to Hwy 16 & 16A, commuting is a breeze. A great family home in a great family neighborhood!

Built in 1989

Essential Information

MLS® #	E4437650
Price	\$424,900
Bedrooms	4
Bathrooms	2.00
Full Baths	2
Square Footage	1,146
Acres	0.00
Year Built	1989
Type	Single Family



Sub-Type	Detached Single Family
Style	4 Level Split
Status	Active

Community Information

Address	144 St. Andrews Drive
Area	Stony Plain
Subdivision	St. Andrews
City	Stony Plain
County	ALBERTA
Province	AB
Postal Code	T7Z 1K7

Amenities

Amenities	Deck, Gazebo, Vaulted Ceiling, Vinyl Windows
Parking	Double Garage Attached

Interior

Appliances	Dishwasher-Built-In, Dryer, Fan-Ceiling, Freezer, Garage Control, Garage Opener, Microwave Hood Fan, Storage Shed, Stove-Electric, Vacuum System Attachments, Vacuum Systems, Washer, Window Coverings, See Remarks, Refrigerators-Two
Heating	Forced Air-1, Natural Gas
Fireplace	Yes
Fireplaces	Brick Facing
Stories	3
Has Basement	Yes
Basement	Full, Partially Finished

Exterior

Exterior	Wood, Stucco
Exterior Features	Fenced, Flat Site, Golf Nearby, Landscaped, Playground Nearby, Schools, Shopping Nearby
Roof	Asphalt Shingles
Construction	Wood, Stucco
Foundation	Concrete Perimeter

Additional Information

Date Listed	May 21st, 2025
Days on Market	1

Zoning

Zone 91

DATA IS DEEMED RELIABLE BUT IS NOT GUARANTEED ACCURATE BY THE REALTORS® ASSOCIATION OF EDMONTON. COPYRIGHT 2025 BY THE REALTORS® ASSOCIATION OF EDMONTON. ALL RIGHTS RESERVED. Trademarks are owned or controlled by the Canadian Real Estate Association (CREA) and identify real estate professionals who are members of CREA (REALTOR®, REALTORS®) and/or the quality of services they provide (MLS®, Multiple Listing Service®)

Listing information last updated on May 22nd, 2025 at 8:48am MDT