

## **\$699,900 - 10435 10437 150 Street, Edmonton**

MLS® #E4437611

**\$699,900**

10 Bedroom, 4.00 Bathroom, 2,043 sqft

Single Family on 0.00 Acres

Canora, Edmonton, AB

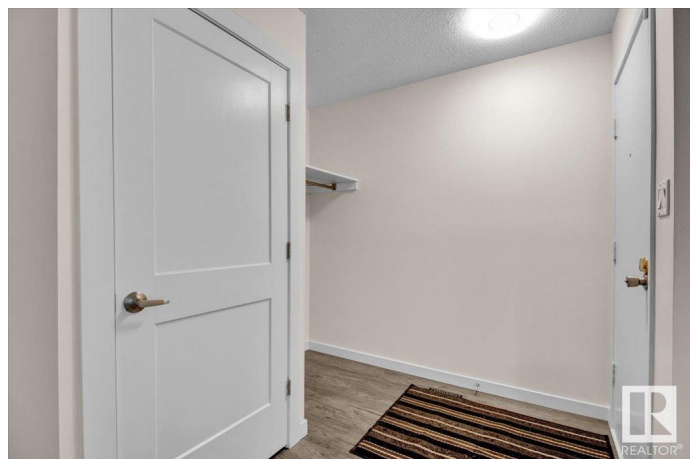
Don't miss this beautifully RENOVATED side-by-side duplex in the sought-after Canora community! Featuring 4 KITCHENS, 10 BEDROOMS, this property is PACKED with POTENTIAL! Step inside to be greeted by an abundance of light streaming through a MASSIVE front window, illuminating the spacious living area. The open-concept layout flows seamlessly into the dining space & kitchen, complete with WHITE CABINETRY & STAINLESS STEEL APPLIANCES. Down the hall, you'll find a LARGE PRIMARY BEDROOM, 2 ADDITIONAL BEDROOMS, & a sleek 4PC BATH! The basement offers even more, with a 2nd KITCHEN featuring WHITE CABINETRY & STAINLESS STEEL APPLIANCES, LARGE LIVING AREA AND 2 MORE BEDROOMS. EACH UNIT HAS ITS OWN LAUNDRY adding extra convenience! Enjoy a MASSIVE BACKYARD & an unbeatable location with Holy cross elementary/junior high across the street, public transportation and shopping walking distance away.

Built in 1974

### **Essential Information**

MLS® # E4437611

Price \$699,900



Bedrooms	10
Bathrooms	4.00
Full Baths	4
Square Footage	2,043
Acres	0.00
Year Built	1974
Type	Single Family
Sub-Type	Duplex Side By Side
Style	Raised Bungalow
Status	Active

### **Community Information**

Address	10435 10437 150 Street
Area	Edmonton
Subdivision	Canora
City	Edmonton
County	ALBERTA
Province	AB
Postal Code	T5P 1P7

### **Amenities**

Amenities	See Remarks
Parking Spaces	4
Parking	See Remarks

### **Interior**

Appliances	See Remarks
Heating	Forced Air-1, Natural Gas
Stories	2
Has Suite	Yes
Has Basement	Yes
Basement	Full, Finished

### **Exterior**

Exterior	Wood, Brick, Stucco
Exterior Features	Back Lane, Fenced, Flat Site, Playground Nearby, Schools, Shopping Nearby
Roof	Asphalt Shingles
Construction	Wood, Brick, Stucco

Foundation                      Concrete Perimeter

**Additional Information**

Date Listed                      May 21st, 2025

Days on Market                2

Zoning                            Zone 21

DATA IS DEEMED RELIABLE BUT IS NOT GUARANTEED ACCURATE BY THE REALTORS® ASSOCIATION OF EDMONTON. COPYRIGHT 2025 BY THE REALTORS® ASSOCIATION OF EDMONTON. ALL RIGHTS RESERVED.Trademarks are owned or controlled by the Canadian Real Estate Association (CREA) and identify real estate professionals who are members of CREA (REALTOR®, REALTORS®) and/or the quality of services they provide (MLS®, Multiple Listing Service®)

Listing information last updated on May 23rd, 2025 at 11:03am MDT