

## \$500,000 - 2883 Maple Way, Edmonton

MLS® #E4437590

**\$500,000**

3 Bedroom, 2.50 Bathroom, 1,566 sqft

Single Family on 0.00 Acres

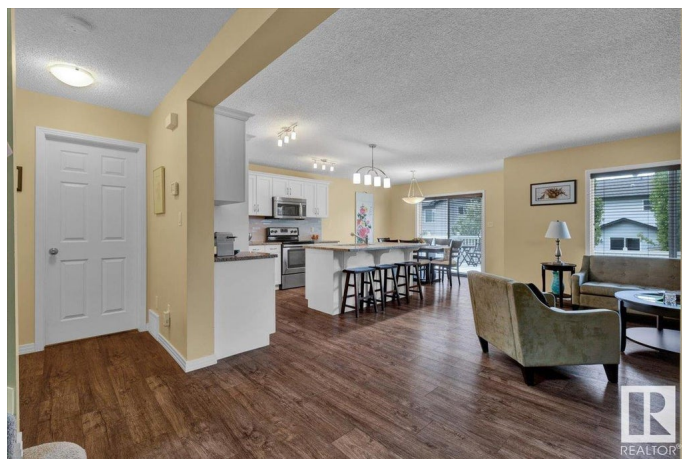
Maple Crest, Edmonton, AB

Terrific 2 storey home located in popular Maple Crest. Gorgeous kitchen is open to the great room and features white cabinetry, a large island, corner pantry, granite counters and stainless steel appliances. Spacious primary bedroom with walk in closet and a large full ensuite bath with tiled floor and granite counters. Additional features include main floor laundry, upgraded laminate flooring and fully fenced and landscaped yard with deck. Shows very well! Garage shelving included. For more details please visit the REALTOR®'s Website.

Built in 2013

### Essential Information

MLS® #	E4437590
Price	\$500,000
Bedrooms	3
Bathrooms	2.50
Full Baths	2
Half Baths	1
Square Footage	1,566
Acres	0.00
Year Built	2013
Type	Single Family
Sub-Type	Detached Single Family
Style	2 Storey



Status Active

### Community Information

Address 2883 Maple Way  
Area Edmonton  
Subdivision Maple Crest  
City Edmonton  
County ALBERTA  
Province AB  
Postal Code T6T 0T4

### Amenities

Amenities Deck  
Parking Spaces 4  
Parking Double Garage Attached

### Interior

Interior Features ensuite bathroom  
Appliances Dishwasher-Built-In, Dryer, Refrigerator, Stove-Electric, Washer, Window Coverings, See Remarks  
Heating Forced Air-1, Natural Gas  
Stories 2  
Has Basement Yes  
Basement Full, Unfinished

### Exterior

Exterior Wood, Vinyl  
Exterior Features Landscaped, Playground Nearby, Public Transportation, Schools, Shopping Nearby  
Roof Asphalt Shingles  
Construction Wood, Vinyl  
Foundation Concrete Perimeter

### School Information

Elementary Julia Kiniski/St. Kateri  
Middle Thelma Chalifoux/Father M  
High Elder Dr. Francis/Austin O

### Additional Information

Date Listed May 21st, 2025

Days on Market 1

Zoning Zone 30

DATA IS DEEMED RELIABLE BUT IS NOT GUARANTEED ACCURATE BY THE REALTORS® ASSOCIATION OF EDMONTON. COPYRIGHT 2025 BY THE REALTORS® ASSOCIATION OF EDMONTON. ALL RIGHTS RESERVED. Trademarks are owned or controlled by the Canadian Real Estate Association (CREA) and identify real estate professionals who are members of CREA (REALTOR®, REALTORS®) and/or the quality of services they provide (MLS®, Multiple Listing Service®)

Listing information last updated on May 22nd, 2025 at 12:47pm MDT