

\$244,000 - 207 1520 Hammond Gate, Edmonton

MLS® #E4437417

\$244,000

2 Bedroom, 2.00 Bathroom, 1,053 sqft

Condo / Townhouse on 0.00 Acres

The Hamptons, Edmonton, AB

The One Youâ€™ve Been Waiting For â€“
Bright & Spacious Corner Unit! Welcome to this stunning 1,050 Sqft 2-bedroom, 2-bathroom corner unit condo that combines space, style, and unbeatable views. This large second-floor home is filled with natural light thanks to its expansive windows and offers a beautiful view of the peaceful north-facing green space. The open-concept layout creates a warm and welcoming atmosphere, while the spacious kitchen features sleek stainless steel appliances and modern finishes. Step out onto the oversized balcony â€“ perfect for morning coffee or evening relaxation. You'll also love the massive in-suite storage room with laundry and a brand-new washer, offering both convenience and functionality. Enjoy the comfort of heated underground parking, keeping your vehicle safe and warm all year round. Tucked away just minutes from the Anthony Henday, this prime location provides easy access to major routes and scenic walking paths â€“ ideal for outdoor lovers.

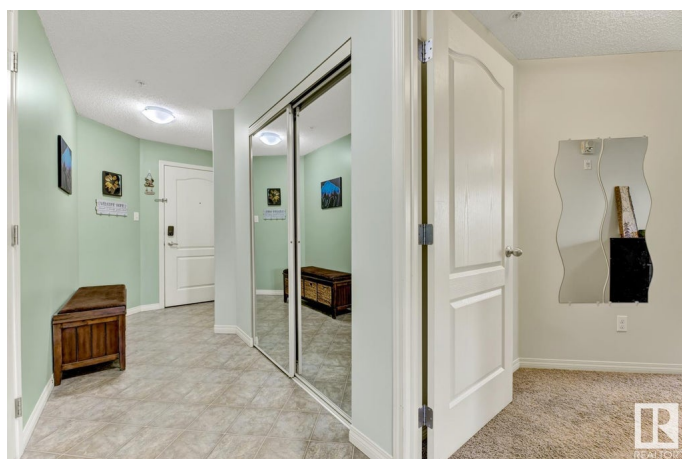
Built in 2008

Essential Information

MLS® # E4437417

Price \$244,000

Bedrooms 2



Bathrooms	2.00
Full Baths	2
Square Footage	1,053
Acres	0.00
Year Built	2008
Type	Condo / Townhouse
Sub-Type	Lowrise Apartment
Style	Single Level Apartment
Status	Active

Community Information

Address	207 1520 Hammond Gate
Area	Edmonton
Subdivision	The Hamptons
City	Edmonton
County	ALBERTA
Province	AB
Postal Code	T6M 0J4

Amenities

Amenities	On Street Parking, Parking-Visitor, Patio, Secured Parking, Security Door, Social Rooms, See Remarks
Parking	Underground

Interior

Interior Features	ensuite bathroom
Appliances	Dishwasher-Built-In, Dryer, Hood Fan, Refrigerator, Stove-Electric, Washer
Heating	In Floor Heat System, Natural Gas
# of Stories	4
Stories	1
Has Basement	Yes
Basement	None, Unfinished

Exterior

Exterior	Wood, Stone, Vinyl
Exterior Features	Golf Nearby, Public Transportation, Schools, Shopping Nearby, See Remarks
Roof	Asphalt Shingles

Construction	Wood, Stone, Vinyl
Foundation	Concrete Perimeter

Additional Information

Date Listed	May 20th, 2025
Days on Market	2
Zoning	Zone 58
Condo Fee	\$584

DATA IS DEEMED RELIABLE BUT IS NOT GUARANTEED ACCURATE BY THE REALTORS® ASSOCIATION OF EDMONTON. COPYRIGHT 2025 BY THE REALTORS® ASSOCIATION OF EDMONTON. ALL RIGHTS RESERVED.Trademarks are owned or controlled by the Canadian Real Estate Association (CREA) and identify real estate professionals who are members of CREA (REALTOR®, REALTORS®) and/or the quality of services they provide (MLS®, Multiple Listing Service®)

Listing information last updated on May 22nd, 2025 at 6:02pm MDT