

## \$475,000 - 132 62 Street, Edmonton

MLS® #E4436470

**\$475,000**

5 Bedroom, 2.00 Bathroom, 1,139 sqft

Single Family on 0.00 Acres

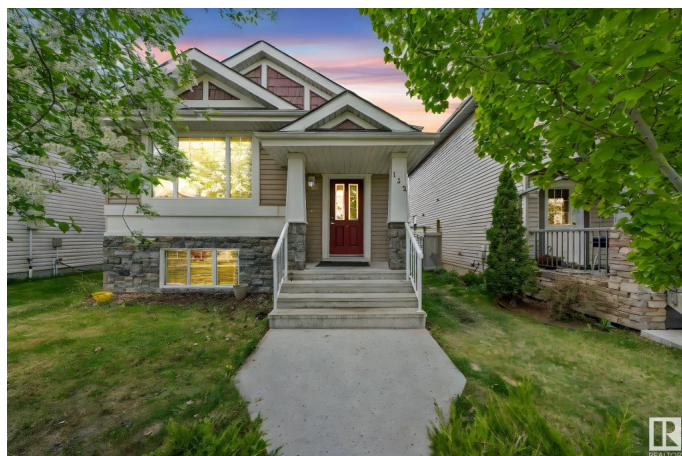
Charlesworth, Edmonton, AB

Welcome to this beautifully maintained bi-level single-family home located in the highly sought-after community of Charlesworth. Offering 1,139 square feet on the main floor, this home features three spacious bedrooms, a full bathroom, a bright living area, dining area and a functional kitchen with ample cabinet space. The fully finished basement with separate entrance adds tremendous value, complete with two additional bedrooms, a full bathroom, a second kitchen, and a cozy living area - perfect for extended family. A double detached garage provides ample parking and storage. Ideally situated close to all major amenities, including parks, schools, shopping, restaurants and public transportation, this home is ideal for growing families or investors alike.

Built in 2006

### Essential Information

MLS® #	E4436470
Price	\$475,000
Bedrooms	5
Bathrooms	2.00
Full Baths	2
Square Footage	1,139
Acres	0.00
Year Built	2006



Type	Single Family
Sub-Type	Detached Single Family
Style	Bi-Level
Status	Active

### Community Information

Address	132 62 Street
Area	Edmonton
Subdivision	Charlesworth
City	Edmonton
County	ALBERTA
Province	AB
Postal Code	T6X 0B9

### Amenities

Amenities	Deck
Parking	Double Garage Detached

### Interior

Appliances	Hood Fan, Oven-Microwave, Refrigerators-Two, Stoves-Two, Dishwasher-Two
Heating	Forced Air-1, Natural Gas
Stories	2
Has Basement	Yes
Basement	Full, Finished

### Exterior

Exterior	Wood, Vinyl
Exterior Features	Picnic Area, Public Transportation, Schools, Shopping Nearby
Roof	Asphalt Shingles
Construction	Wood, Vinyl
Foundation	Concrete Perimeter

### Additional Information

Date Listed	May 14th, 2025
Days on Market	8
Zoning	Zone 53

DATA IS DEEMED RELIABLE BUT IS NOT GUARANTEED ACCURATE BY THE REALTORS® ASSOCIATION OF EDMONTON. COPYRIGHT 2025 BY THE REALTORS® ASSOCIATION OF EDMONTON. ALL RIGHTS RESERVED. Trademarks are owned or controlled by the Canadian Real Estate Association (CREA) and identify real

estate professionals who are members of CREA (REALTOR®®, REALTORS®®) and/or the quality of services they provide (MLS®®, Multiple Listing Service®®)

Listing information last updated on May 22nd, 2025 at 4:17pm MDT