

\$549,000 - 10727 113 Street, Edmonton

MLS® #E4435609

\$549,000

3 Bedroom, 1.00 Bathroom, 1,076 sqft
Single Family on 0.00 Acres

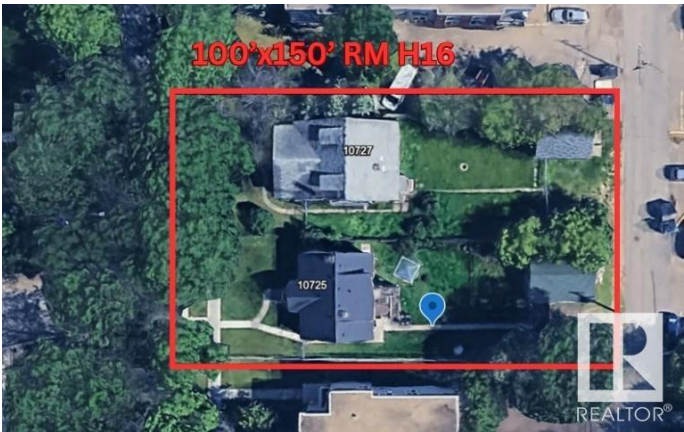
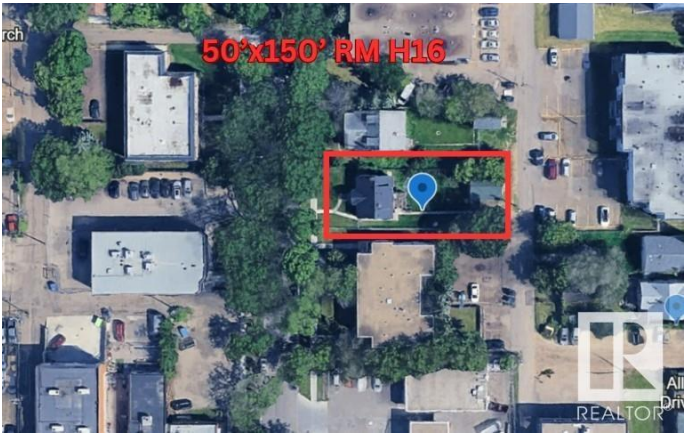
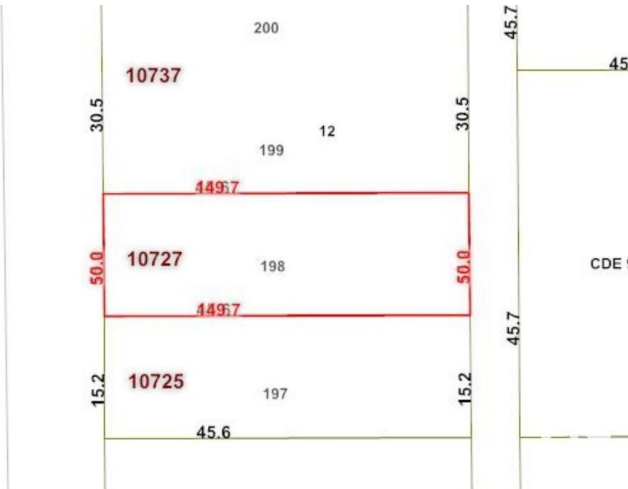
Queen Mary Park, Edmonton, AB

50â€™x150â€™ RM H16 Medium Scale Residential zoned lot in Queen Mary Park. Great potential for CMHC MLI - 4plex w/ legal basement suites, 2 skinnies, lots of opportunities to maximize your investment. This location is excellent for future redevelopment, close to amenities, public transit, LRT, minutes from downtown & in a neighbourhood where other redevelopment is already happening & more being planned all the time. Take advantage of the City encouraging higher density & development & secure your next project!

Built in 1927

Essential Information

MLS® #	E4435609
Price	\$549,000
Bedrooms	3
Bathrooms	1.00
Full Baths	1
Square Footage	1,076
Acres	0.00
Year Built	1927
Type	Single Family
Sub-Type	Detached Single Family
Style	Bungalow
Status	Active



Community Information

Address	10727 113 Street
Area	Edmonton
Subdivision	Queen Mary Park
City	Edmonton
County	ALBERTA
Province	AB
Postal Code	T5H 3H9

Amenities

Amenities	See Remarks
Parking	Single Garage Detached

Interior

Appliances	None
Heating	Forced Air-1, Natural Gas
Stories	1
Has Basement	Yes
Basement	Full, Unfinished

Exterior

Exterior	Wood, Brick
Exterior Features	Back Lane, Fenced, Park/Reserve, Playground Nearby, Public Transportation, Schools, Shopping Nearby, Subdividable Lot, View City
Roof	Asphalt Shingles
Construction	Wood, Brick
Foundation	Concrete Perimeter

School Information

Elementary	John A. McDougall
Middle	Westmount
High	Inner City High

Additional Information

Date Listed	May 9th, 2025
Days on Market	81
Zoning	Zone 08

DATA IS DEEMED RELIABLE BUT IS NOT GUARANTEED ACCURATE BY THE REALTORS® ASSOCIATION OF EDMONTON. COPYRIGHT 2025 BY THE REALTORS® ASSOCIATION OF EDMONTON. ALL RIGHTS RESERVED. Trademarks are owned or controlled by the Canadian Real Estate Association (CREA) and identify real

estate professionals who are members of CREA (REALTOR®®, REALTORS®®) and/or the quality of services they provide (MLS®®, Multiple Listing Service®®)

Listing information last updated on July 29th, 2025 at 12:18am MDT