

Courtesy Of Michael Medos Of Sweetly

\$375,000 - 17 979 Crystallina Nera Way, Edmonton

MLS® #E4428851

\$375,000

2 Bedroom, 2.50 Bathroom, 1,557 sqft
Condo / Townhouse on 0.00 Acres

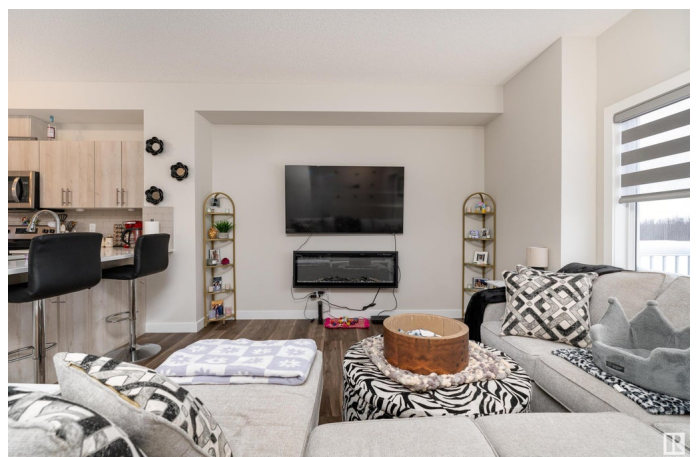
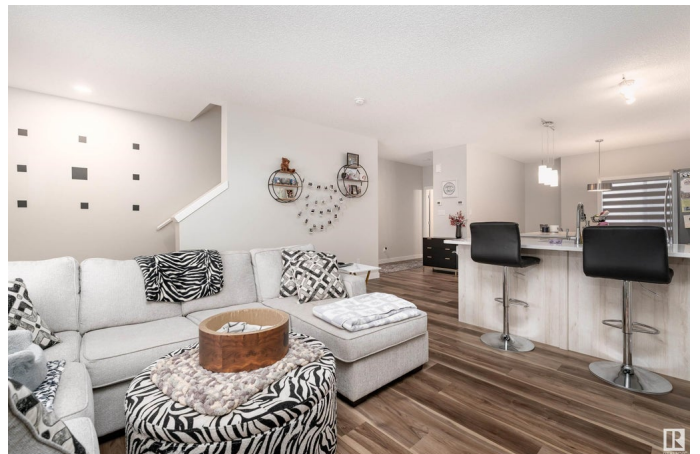
Crystallina Nera West, Edmonton, AB

Welcome to this 1,556 sq. ft. stunning 3-storey end unit townhouse located in the highly sought-after Crystallina neighborhood! The ground floor features a convenient entryway and direct access to a double attached garage, providing easy entry and ample storage space. The second floor boasts an open-concept design, with a beautifully equipped kitchen featuring sleek cabinetry and stainless steel appliances. The large dining area and huge living room are perfect for entertaining, and a powder room completes this level, offering added convenience. The upper level offers two generous-sized bedrooms, each with its own private ensuite bathroom—ideal for comfort and privacy. Situated in an excellent location, backing on to a tree line, you'll also enjoy its proximity to parks, schools, transit, shopping, and so much more. Don't miss out on this wonderful opportunity to live in Crystallina Nera!

Built in 2021

Essential Information

MLS® #	E4428851
Price	\$375,000
Bedrooms	2
Bathrooms	2.50
Full Baths	2



Half Baths	1
Square Footage	1,557
Acres	0.00
Year Built	2021
Type	Condo / Townhouse
Sub-Type	Townhouse
Style	3 Storey
Status	Active

Community Information

Address	17 979 Crystallina Nera Way
Area	Edmonton
Subdivision	Crystallina Nera West
City	Edmonton
County	ALBERTA
Province	AB
Postal Code	T5Z 0S3

Amenities

Amenities	See Remarks
Parking	Double Garage Detached

Interior

Interior Features	ensuite bathroom
Appliances	Dishwasher-Built-In, Dryer, Garage Control, Garage Opener, Microwave Hood Fan, Oven-Built-In, Refrigerator, Washer, Window Coverings
Heating	Forced Air-1, Natural Gas
Fireplace	Yes
Fireplaces	Wall Mount
Stories	3
Has Basement	Yes
Basement	None, No Basement

Exterior

Exterior	Wood, Vinyl
Exterior Features	Flat Site, Landscaped, Playground Nearby, Schools, Shopping Nearby
Roof	Asphalt Shingles
Construction	Wood, Vinyl
Foundation	Concrete Perimeter

School Information

Elementary	Lago Lindo School
Middle	Dickinsfield School
High	Queen Elizabeth School

Additional Information

Date Listed	April 3rd, 2025
Days on Market	5
Zoning	Zone 28
Condo Fee	\$210

DATA IS DEEMED RELIABLE BUT IS NOT GUARANTEED ACCURATE BY THE REALTORS® ASSOCIATION OF EDMONTON. COPYRIGHT 2025 BY THE REALTORS® ASSOCIATION OF EDMONTON. ALL RIGHTS RESERVED. Trademarks are owned or controlled by the Canadian Real Estate Association (CREA) and identify real estate professionals who are members of CREA (REALTOR®, REALTORS®) and/or the quality of services they provide (MLS®, Multiple Listing Service®)

Listing information last updated on April 8th, 2025 at 8:47pm MDT