

\$349,900 - 49 1010 Millbourne Road, Edmonton

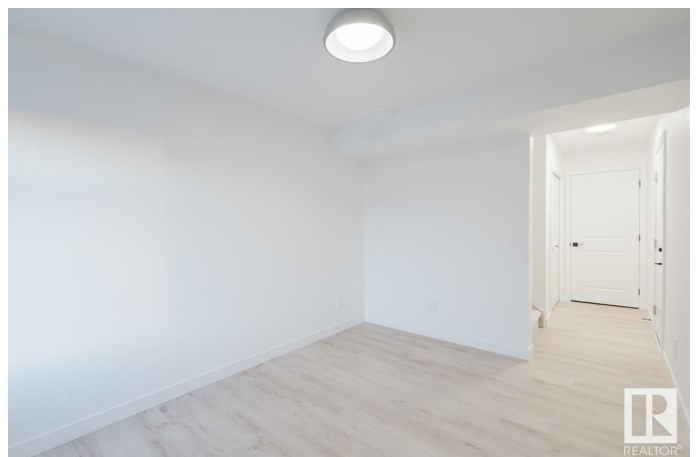
MLS® #E4422716

\$349,900

3 Bedroom, 2.50 Bathroom, 1,514 sqft
Condo / Townhouse on 0.00 Acres

Michaels Park, Edmonton, AB

3 BEDROOM & DEN. This stunning condo boasts a spacious, open concept living with modern finishes and comfortable living spaces. The lower level features a convenient single attached garage, a generous storage room and a versatile den, perfect for a home office or extra living space. The main floor offers a half bath, a laundry room, and a walk-in pantry, providing ample storage and practicality. The kitchen is a chef's dream with quartz countertops and a convenient waterline to the fridge. Head out onto the deck with included gas line for those summer BBQ's. Upstairs you'll discover a full 4-piece bathroom, 2 large bedrooms, and a spacious master with a walk-in closet and a luxurious ensuite. This home comes with a generous \$2,500 appliance allowance, high-efficiency furnace & triple-pane windows. Don't miss this rare opportunity to own a piece of Michael's Park luxury living. **MUST QUALIFY FOR FIRST PLACE PROGRAM. QUICK POSSESSION!** Photos may differ from actual property. Appliances NOT included.



Built in 2024

Essential Information

MLS® #	E4422716
Price	\$349,900

Bedrooms	3
Bathrooms	2.50
Full Baths	2
Half Baths	1
Square Footage	1,514
Acres	0.00
Year Built	2024
Type	Condo / Townhouse
Sub-Type	Townhouse
Style	3 Storey
Status	Active

Community Information

Address	49 1010 Millbourne Road
Area	Edmonton
Subdivision	Michaels Park
City	Edmonton
County	ALBERTA
Province	AB
Postal Code	T6K 1M7

Amenities

Amenities	See Remarks, Natural Gas BBQ Hookup
Parking	Single Garage Attached

Interior

Interior Features	ensuite bathroom
Appliances	Garage Control, Garage Opener, See Remarks
Heating	Forced Air-1, Natural Gas
Stories	3
Has Basement	Yes
Basement	None, No Basement

Exterior

Exterior	Wood, Stone, Vinyl
Exterior Features	Airport Nearby, Landscaped, Park/Reserve, Schools
Roof	Asphalt Shingles
Construction	Wood, Stone, Vinyl
Foundation	Concrete Perimeter

Additional Information

Date Listed	February 21st, 2025
Days on Market	47
Zoning	Zone 29
Condo Fee	\$188

DATA IS DEEMED RELIABLE BUT IS NOT GUARANTEED ACCURATE BY THE REALTORS® ASSOCIATION OF EDMONTON. COPYRIGHT 2025 BY THE REALTORS® ASSOCIATION OF EDMONTON. ALL RIGHTS RESERVED. Trademarks are owned or controlled by the Canadian Real Estate Association (CREA) and identify real estate professionals who are members of CREA (REALTOR®, REALTORS®) and/or the quality of services they provide (MLS®, Multiple Listing Service®)

Listing information last updated on April 9th, 2025 at 1:47am MDT