

\$559,000 - 113 7471 May Common, Edmonton

MLS® #E4404596

\$559,000

2 Bedroom, 2.00 Bathroom, 1,134 sqft
Condo / Townhouse on 0.00 Acres

Magrath Heights, Edmonton, AB

Live in luxury at the prestigious "The Edge"..
Brand new & ready for move in. 2 bedrooms
with 2 full bath ground floor unit with 2 parking
stalls (surface & underground with storage).
With 10' ceilings, many upgrades and a ravine
view, this unit is a 10+. Ready for immediate
possession. Building comes with all amenities.
A gem in SW Edmonton!

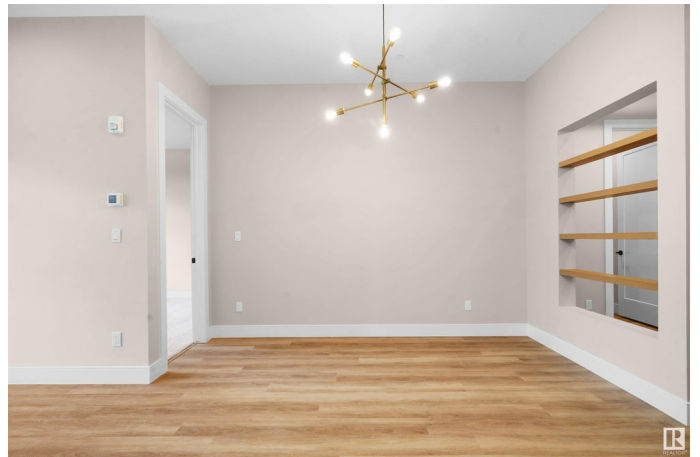
Built in 2020

Essential Information

MLS® #	E4404596
Price	\$559,000
Bedrooms	2
Bathrooms	2.00
Full Baths	2
Square Footage	1,134
Acres	0.00
Year Built	2020
Type	Condo / Townhouse
Sub-Type	Lowrise Apartment
Style	Penthouse
Status	Active

Community Information

Address	113 7471 May Common
Area	Edmonton



Subdivision	Magrath Heights
City	Edmonton
County	ALBERTA
Province	AB
Postal Code	T6R 0X5

Amenities

Amenities	Air Conditioner, Ceiling 10 ft., Closet Organizers, Deck, Hot Water Natural Gas, No Animal Home, No Smoking Home, Parking-Extra, Parking-Plug-Ins, Parking-Visitor, Storage-Locker Room
Parking Spaces	2
Parking	Heated, Parkade, Single Indoor, Underground

Interior

Interior Features	ensuite bathroom
Appliances	Dishwasher-Built-In, Dryer, Oven-Built-In, Oven-Microwave, Refrigerator, Stove-Countertop Gas, Washer
Heating	Forced Air-1, Natural Gas
Fireplace	Yes
Fireplaces	Insert
# of Stories	4
Stories	1
Has Basement	Yes
Basement	None, No Basement

Exterior

Exterior	Wood, Brick, Fiber Cement
Exterior Features	Backs Onto Park/Trees, Landscaped, Park/Reserve, Private Setting, Schools, Shopping Nearby, View City
Roof	Flat
Construction	Wood, Brick, Fiber Cement
Foundation	Concrete Perimeter

School Information

Elementary	Esther Starkman
Middle	Nellie Carlson
High	Lillian Osborne

Additional Information

Date Listed	September 3rd, 2024
-------------	---------------------

Days on Market	215
Zoning	Zone 14
HOA Fees	225
HOA Fees Freq.	Annually
Condo Fee	\$498

DATA IS DEEMED RELIABLE BUT IS NOT GUARANTEED ACCURATE BY THE REALTORS® ASSOCIATION OF EDMONTON. COPYRIGHT 2025 BY THE REALTORS® ASSOCIATION OF EDMONTON. ALL RIGHTS RESERVED. Trademarks are owned or controlled by the Canadian Real Estate Association (CREA) and identify real estate professionals who are members of CREA (REALTOR®, REALTORS®) and/or the quality of services they provide (MLS®, Multiple Listing Service®)

Listing information last updated on April 6th, 2025 at 1:32am MDT