

\$2,750,000 - 15712 112 Avenue, Edmonton

MLS® #E4375562

\$2,750,000

0 Bedroom, 0.00 Bathroom,
Industrial on 0.00 Acres

Sheffield Industrial, Edmonton, AB

18,869 sq.ft. comprised of 14,128 sq.ft.± main floor and 4,741 sq.ft.± second floor office, for a total main building size of 18,869 sq.ft.±. 760 sq.ft.± storage building included in sale. Fenced and secured parking lot or storage area. Recessed dock loading and three 12' x 12' grade loading doors. Second Floor was extensively renovated in 2015 and includes reception, 5 offices, boardroom, large bullpen area, lunchroom and washrooms. Has easy access to 156 Street and Yellowhead Trail and close proximity to public transportation. 3 phase industrial power (to be confirmed by buyer). Ceiling height of 14' - 16' clear span.

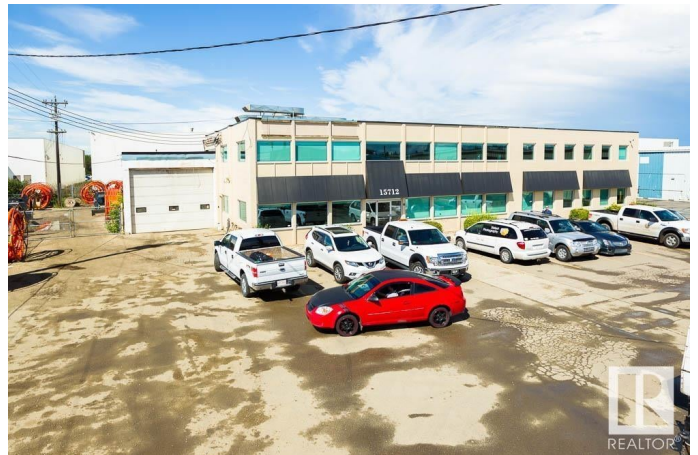
Built in 1962

Essential Information

MLS® #	E4375562
Price	\$2,750,000
Bathrooms	0.00
Acres	0.00
Year Built	1962
Type	Industrial
Status	Active

Community Information

Address 15712 112 Avenue



Area	Edmonton
Subdivision	Sheffield Industrial
City	Edmonton
County	ALBERTA
Province	AB
Postal Code	T5M 2W1

Exterior

Exterior	Concrete
Construction	Concrete

Additional Information

Date Listed	March 5th, 2024
Days on Market	410
Zoning	Zone 40

DATA IS DEEMED RELIABLE BUT IS NOT GUARANTEED ACCURATE BY THE REALTORS® ASSOCIATION OF EDMONTON. COPYRIGHT 2025 BY THE REALTORS® ASSOCIATION OF EDMONTON. ALL RIGHTS RESERVED. Trademarks are owned or controlled by the Canadian Real Estate Association (CREA) and identify real estate professionals who are members of CREA (REALTOR®, REALTORS®) and/or the quality of services they provide (MLS®, Multiple Listing Service®)

Listing information last updated on April 19th, 2025 at 10:32am MDT